

skin cancer - what to look for

It is important to identify any mole or lesion which may have developed or has changed in size or nature over time. If you or your GP are concerned, seeing a dermatologist to identify or review any suspicious spot on the skin is a sensible precaution. Referral from your GP to the SCA clinic may be appropriate.

facts about skin cancer

- Around two thirds of people born in Australia will require treatment for skin cancer at some stage in their life.
- At least 250,000 people require treatment for BCC (Basal Cell Carcinoma, a non-melanoma skin cancer) every year and around 120,000 people require treatment for SCC (Squamous-cell carcinoma) every year.
- Over 10,000 people have a melanoma removed each year.
- Most skin cancers if treated early are cured.
- Unfortunately around 1400 people still die from melanoma's each year and 400 people die from SCC.

support the foundation

Our Foundation relies on the support of others to ensure we can continue with our commitment of providing world class care, education and research for skin disorders. See below for the range of ways on how you can support us.

fundraise

Start fundraising with friends and family. Sign up for an existing event in your region or create your own event with our online Foundation fundraising page. Simply visit our website and refer to the 'fundraise now' button on the home page for your convenience.

Alternatively don't hesitate to contact us:
t: 03 9623 9400 e: fundraise@skincancer.asn.au

donation

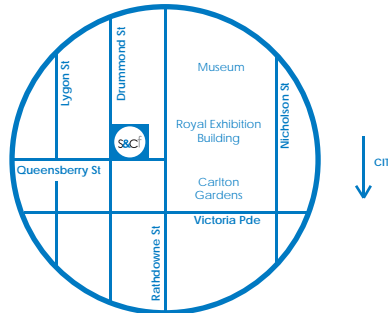
Donate to our cause today. All donations of \$2 or more are tax deductible. Simply visit our website and refer to the 'donate now' button on the home page for your convenience.

Alternatively don't hesitate to contact us:
t: 03 9623 9400 e: donate@skincancer.asn.au

bequest

If you wish to make a bequest a member of our Foundation is available to talk with you regarding your preferred option in addition to discussing our recognition of support program.

t: 03 9623 9400 e: bequest@skincancer.asn.au



Skin & Cancer Foundation Inc

Level 1/80 Drummond Street, Carlton VIC 3053

t: +61 3 9623 9400 | f: +61 3 9639 3575 | e: info@skincancer.asn.au

www.skincancer.asn.au

ABN. 58 895 584 259 Registered Charity A 12501

DISCLAIMER: Content in this brochure is provided for general information only. It is not intended as medical advice, and should not be relied upon as a substitute for consultations with qualified health professionals who can determine your individual medical needs.

skin cancer assessment clinic



healthy skin by dermatologists

the skin & cancer foundation inc

The Skin & Cancer Foundation Inc is Australia's leading specialist dermatology centre. It is a not-for-profit organisation specialising in the treatment, education and research of skin disorders.

Established in 1987, the Foundation offers patients peace of mind knowing that their skin is in expert hands. The Foundation provides the best in dermatology industry standards, and professional advice.

the skin cancer assessment clinic

The Skin Cancer Assessment Clinic (SCA) is one of a number of speciality clinics run at the Foundation. In this clinic, we see people with a variety of skin cancers and related skin lesions for both diagnosis and advice on treatment.

the skin cancer assessment clinic team

On the day of consultation a number of people will be involved in your consultation. These will include Dermatologists, training specialists and nurses if a procedure is required.



during your consultation

Most standard consultations last around half an hour, but please allow 1-2 hours. This allows time for more complex consultations and for any procedures that may need to be done i.e. biopsies or minor excisions.

Any surgical procedures that may be needed are performed under local anaesthetic.



type of treatment

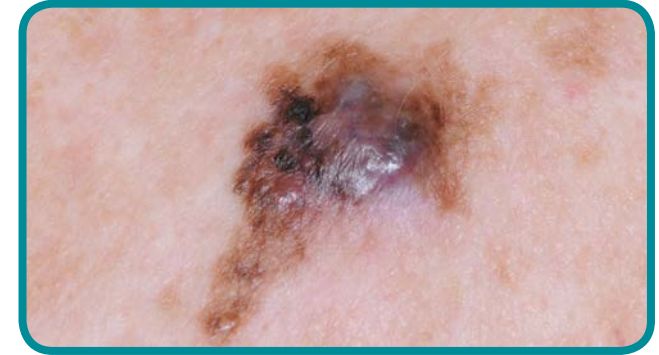
Treatment options will be discussed during your consultation. There are various types of treatment available for skin cancers.

Some require topical treatments or radiotherapy, while others require surgical intervention. Sometimes you may be referred to another clinic for treatment. This will be discussed with you.

follow up

This will depend on your treatment plan. You may be required to see the doctor 1-2 weeks after your initial consultation to discuss pathology results and treatment options, or to take out any sutures if you had a procedure.

Once treatment has been completed you will be discharged back to your referring doctor.



other information

On the day of your appointment, please ensure that you bring along:

- Medicare Card / Veterans Card
- Pension / Health Care Card
- List of your current medications

anticoagulant medication

Please inform our doctors if you take any anticoagulant medication such as aspirin, plavix or warfarin.

parking

There is metered parking available in the streets close by, in addition to 24 hour public parking off Pelham and Rathdowne Streets.

accommodation

If you are travelling a long distance, it is advisable to find accommodation and stay the night of your surgery. There are a number of motels close to the Skin & Cancer Foundation Inc. Please contact us for a list.